

# XDocs™ Manufacturing Suite Data Sheet

## Overview

The *XDocs Manufacturing Suite* has been developed to support companies delivering complex equipment and solutions, including machines, hardware and related software.

Complex machines and solutions have complex documentation needs. Information is often stored in multiple systems, but engineers in the field need access to “as-built” information and replacement parts ordering capability.

We can deliver this content all in one place, via an IPC (Illustrated Parts Catalogue) alongside other document types: installation guides, maintenance guides, user guides, fault-finding documents etc.

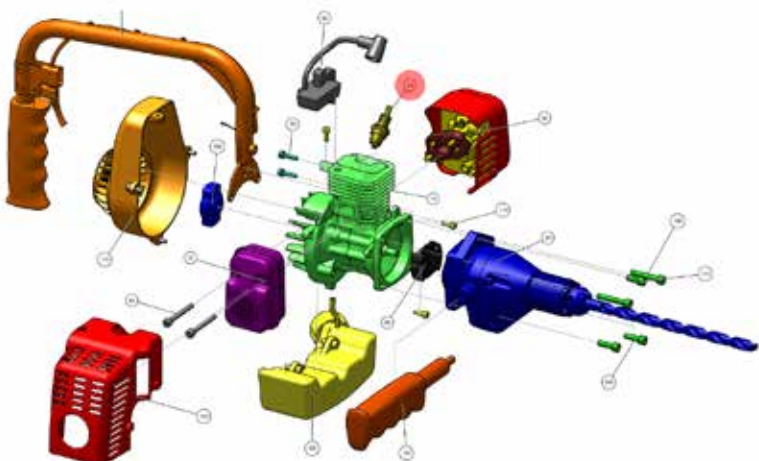
## Connectors

XDocs has been built with open standards where possible and with open standards in mind everywhere. A comprehensive set of RESTful APIs allow connection to 3rd party systems. Building on these APIs, Bluestream has developed ‘connectors’ to manufacturing systems such as Siemens Teamcenter, ERP, PLM, CAD systems and much more.

## Assembly Image Handling

All types of images can be imported including CAD, JPEG, PNG and SVG with call-out information.

- XDocs can automatically convert 2D CAD formats to high-resolution PNGs in order to generate hotspots.
- Using a configured third-party tool, call-out hotspots can be automatically generated.
- Image-matching rules for assemblies and their corresponding images can be configured.
- Configuration allows assembly images to be matched to their corresponding parts information.



## Administration

System Administration can be viewed in different languages. It is currently available in English and French, but other languages can be added. The Administration screens/tabs are as follows:

## Configuration

The configuration menu features the following options:

- Companies/Customers.
  - Define Customers and Sites and add any contact details.
- Vendors.
  - Define 3rd party parts suppliers
- Global Figure Columns.
  - Customize parts tables by specifying with data from the BOM to display.

## BOM Manager

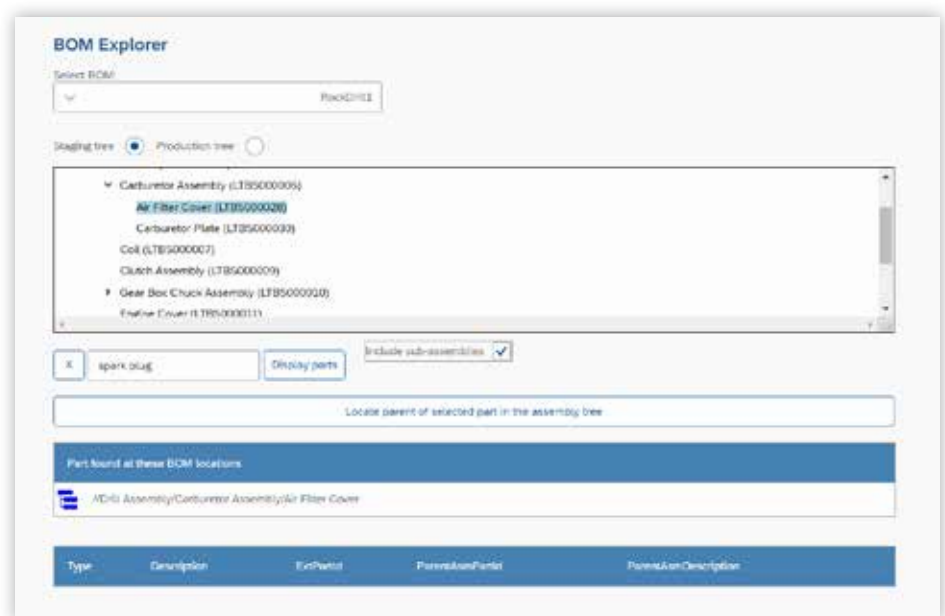
The BOM manager handles all types of Bill of Materials, with it you can:

- Create multiple BOMs.
- Import CSV BOMs or parts lists (import algorithm is in a configurable plug-in).
- Merge multiple BOMs to create one master IPC per site, also known as the 'production tree'. (will let you remove duplicates, update existing parts, etc.).
- Generate IPC using configured 'image ⇒ part' matching rules (the rules are defined in the client's configurable plug-in).

## BOM Explorer

Once the BOMs have been merged you can use the BOM Explorer to:

- Browse production tree to see results of merged BOMs.
- Browse staging tree of BOM to see the unmerged BOM's tree.
- Search for parts.
- Locate searched parts in the assembly tree.



## Catalog Editor

The Catalog Editor provides an interactive preview and lets you:

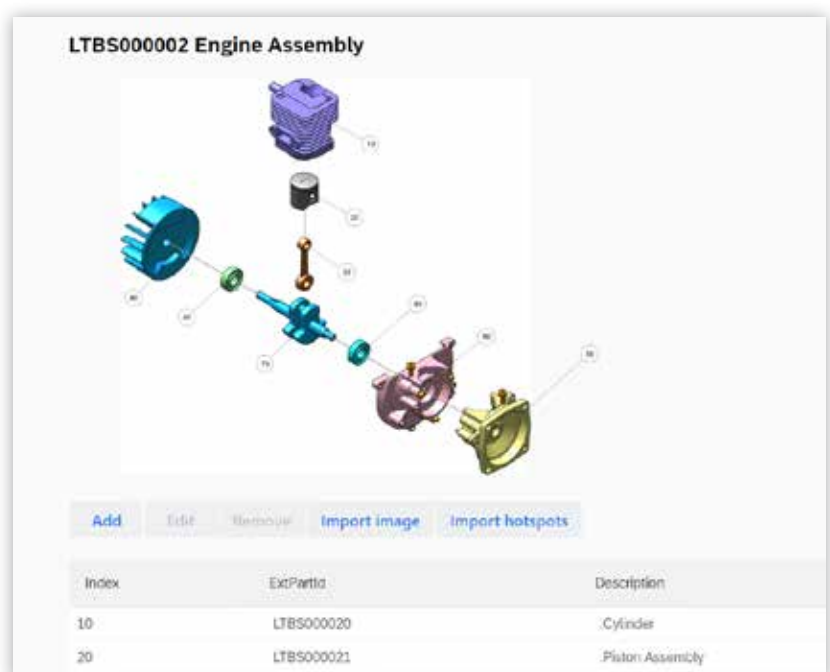
- View IPC that was generated from the BOM Manager.
- Add parts to the catalog (parts can be selected from BOM data).
- Rename figures.
- Remove figures.
- Preview figure images and corresponding call-out information.
- Generate DITA map and topics from the preview IPC (these are generated on the server and can be viewed in *XDocs DITA CCMS* or *WEX*).



## Figure Editor

The figure editor provides an interactive preview of images.

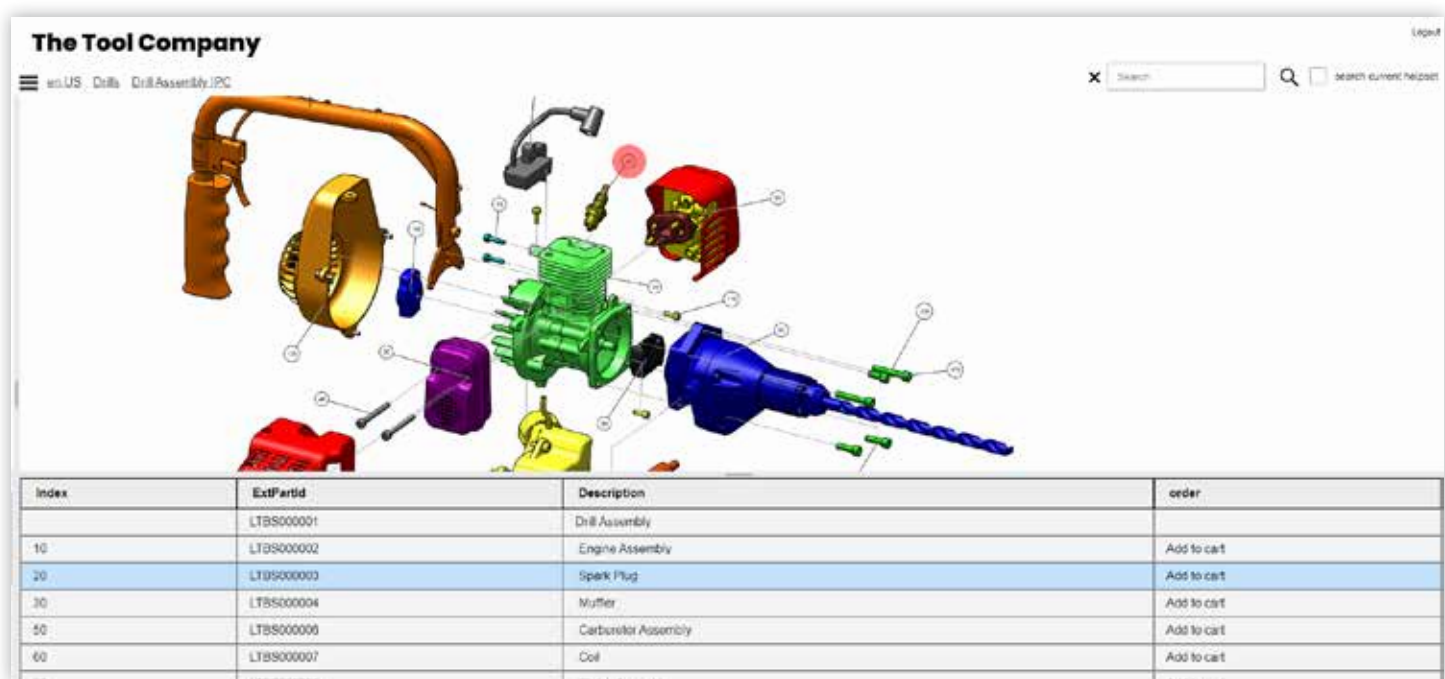
- Add/update a figure's image.
- Upload hotspot information for an assembly image.
- Edit parts list.
- Change call-out numbers.
- Change indent level of a part.





## IPC and DITA

- **XDocs Manufacturing Suite** generates the IPC, creating DITA topics and a site DITAmapping from the imported BOMs and image files.
- IPC topics can be reviewed, edited, and published like normal DITA.
- IPC topics use the “concept” schema.
- Call-out hotspots are represented using an <imagemap> element linked up to the parts table.



## IPC Delivery Platform/Interactive Service Documentation Platform

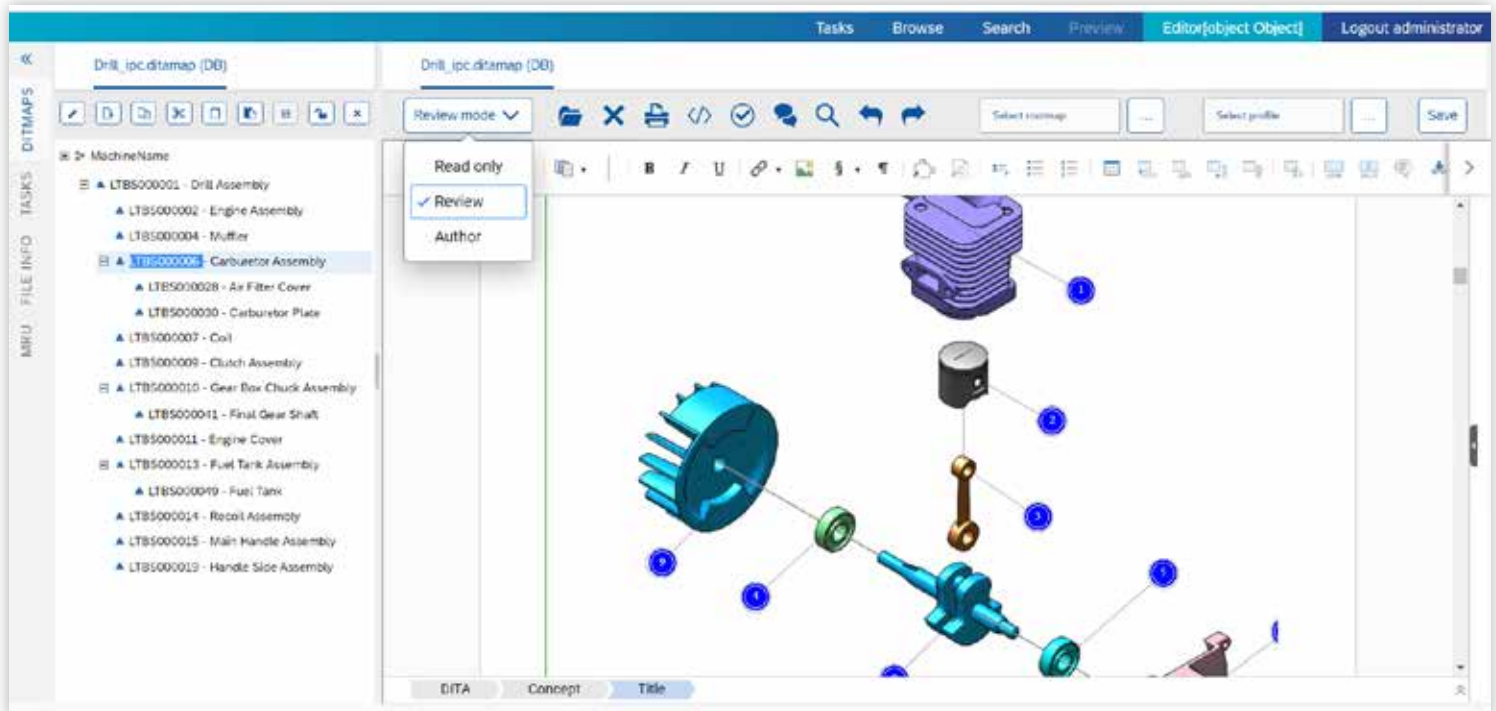
- KB Config has an IPC toggle when publishing a ditamapping to utilize our integrated IPC html transformation.
- Assembly images can be panned and zoomed.
- Call-outs in assembly images are hot-spotted and linked to the corresponding parts in the parts table.
- Clicking on a part in the parts table will highlight all associated call-outs.
- Parts can be added to a shopping cart.
- The shopping cart allows you to order different quantities of each selected part.
- Clicking a figure in the table of contents will also highlight where that figure occurs elsewhere in the site.

## Content review and collaboration with XDocs WEX

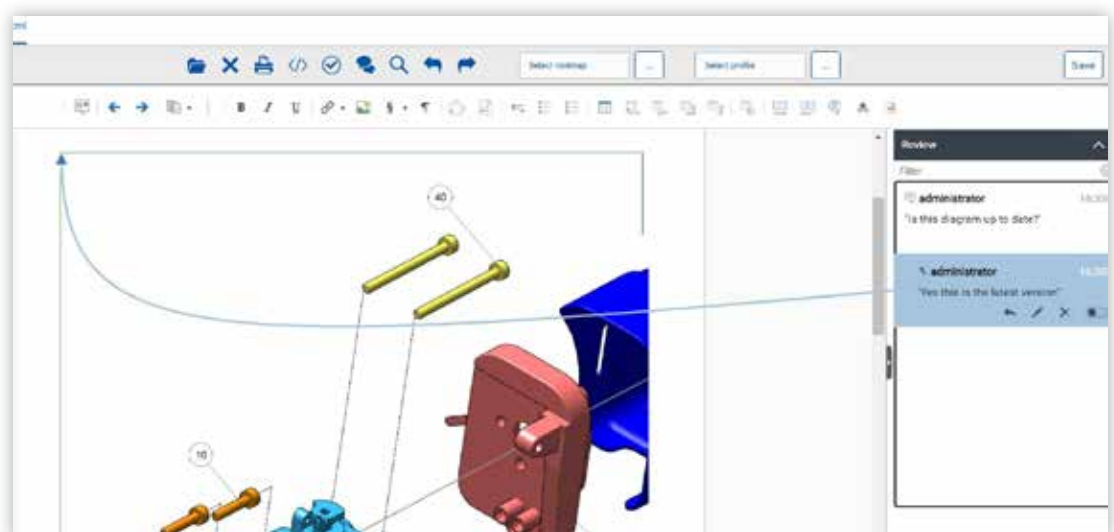
XDocs WEX is a browser based review and collaboration application.

WEX enables SMEs (Subject Matter Experts) to be easily involved in the review and collaboration cycles when producing technical documentation. WEX supports different User types with varying permissions based on specific projects — an author on one project may be a Subject Matter Expert on another.

You can view the whole DITAmatrix when reviewing content and see the context of what you have been asked to assess.

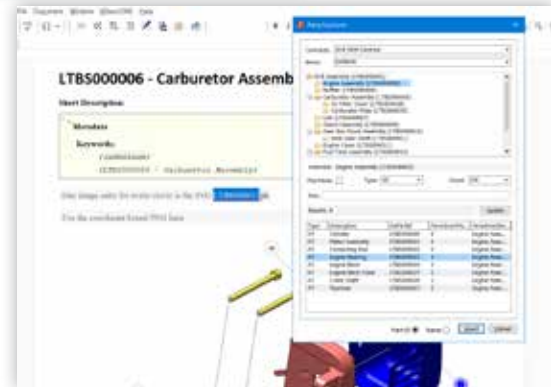


The full thread of comments is available to all Users.



## Content Availability

Once an IPC has been created the DITA content is available for other Users and Parts Information can be easily inserted into other documentation.



## Benefits

With **XDocs Manufacturing Suite** you control the flow of 'Service Information' from Engineering to Fulfilment:

- Enhance the end user product experience
- Create better documentation faster, reuse content with confidence and update information with ease.
- Create precise customizable Illustrated Parts Catalogs for each customer site.
- Build IPCs, Maintenance Schedules, Installation Guides etc. and localize them to any language.
- Increase parts sales and reduce errors in parts ordering.
- Make service engineers, catalogers, technical writers and service parts managers more productive.
- Full control of the information flow:
  - Audit trail – what was changed, when' by who.
  - Instant comparison between versions.
- A streamlined workflow for producing integrated service documentation.
- Rapid information updates (to all output formats i.e. IPC, Doc, Maintenance Schedules.
- Helps ensure data consistency and integrity.
- Eliminates system redundancy.
- Build fully customizable Web-based Delivery Portals.

## About Bluestream

Bluestream are the developers of **XDocs DITA CCMS**, a fully compliant DITA 1.3 Component Content Management System (CCMS).

**XDocs DITA CCMS** is the leading single vendor solution for organizations looking to improve and enhance their information workflow. With a unique rapid to deploy methodology coupled with unrivalled functionality, **XDocs DITA CCMS** is inspiring teams of authors to create powerful user-focused content that can be flexibly delivered to any device or platform.

In business since 2013, Bluestream helps manufacturing companies deliver interactive spare parts catalogs and service information portals.

Find out how **Bluestream** can revolutionize your content.  
Contact us today at **info@bluestream.com**.